



## Industrial Hand-Held Laser Scanner



## General Description

Unmatched ergonomics for flexible and easy installation, intuitive use, reliable and accurate in the long-term for all industrial applications: these outstanding characteristics perfectly summarize the main benefits offered by the renewed Dragon family.

**Designed for productivity:** operator comfort and productivity, essential in any scan-intensive application, is facilitated by the ergonomic handle, well-balanced weight, multiple good-read feedback (loud beeper, dual patented 3GL™ feedback including 2 leds and a green spot) and built-in metal hook for the reader hung-up on an elastic reel. All this is combined with the Dragon's™ superior reading performance further strengthened by patented Puzzle Solver Technology™ to allow fast and accurate reading of standard, poorly printed and damaged codes.

**Reliability and accuracy in the long term:** the rugged mechanics of the Dragon™ have been developed and tested to withstand extreme shock conditions (tens of drops from 2 m) as well as normal ones (thousands of 1 m drops) while reading performance and accuracy remain unchanged.

**Superior radio features:** operators requiring mobility in the manufacturing plant as well as in the warehouse or distribution center can benefit from the versatility of the mobile models: the Datalogic Star Cordless System™ represents the key to increase productivity and flexibility in the working area; it offers scalable solutions to solve simple point-to-point applications and complex projects. Furthermore, the Dragon™ M with a display and 3 push-button keypad allows the operator to visualize the code, receive information from the host and actively interact with it.

**Installation flexibility:** the set of accessories include a single and multiple battery charger (four slots), holder and stand, offering the opportunity to set-up the working area in the most useful and practical way.

## Features

### **Dragon™ Desk**

- > 2 meter drop resistance
- > Standard, LR and XLR optics
- > Man/machine interface: loud beeper and 3GL™ feedback
- > 10 cm to 10 m reading range

### **Dragon™ Mobile**

- > Several models available:
  - With or without display
  - Standard, LR and XLR optics
  - 433 MHz or 910 MHz radio systems
- > Seamless roaming
- > Point-to-Point & Multipoint transmission
- > 100% compatible with STAR-System™
- > Plug-in battery

## Applications

- > Work-in-progress control
- > Warehouse management
- > Shipping and receiving control
- > Cash & carry retail applications
- > Forklifts



# Industrial Hand-Held Laser Scanner

## Specifications

### MODELS

LIGHT SOURCE  
MAX SCAN RATE  
MAX RESOLUTION  
PRINT CONTRAST RATIO (min)  
READING ANGLE  
READING INDICATORS  
BAR CODES

### PROGRAMMING METHOD

Manual  
Automatic  
Datalogic Aladdin™

ENHANCED FEATURES  
CASE MATERIAL  
AMBIENT LIGHT CONDITIONS  
HUMIDITY  
ENVIRONMENTAL PROTECTION

### CRADLE

POWER SUPPLY  
POWER CONSUMPTION  
READING INDICATORS  
INTERFACES  
DIMENSIONS without antenna  
CASE MATERIAL  
WEIGHT

### MODELS

POWER SUPPLY  
CONSUMPTION  
INTERFACES  
OPERATING TEMPERATURE  
STORAGE TEMPERATURE  
DROP RESISTANCE  
WEIGHT

### DRAGON™ D & DRAGON™ M

VLD 630 - 680 nm  
35 ± 5 scans/sec  
0.076 mm (D/M131); 0.25 mm (D/M1x1 LR); 0.33 mm (D/M1x1 XLR)  
15%  
Skew: ±60; Pitch: 5 to 55, -5 to -55; Tilt: ±20  
Laser ON, 3 GL™ feedback, Beeper, Good transmission (Dragon™ M only)  
2/5 family, Code 39 (plus Code 32, Cip 39), EAN/UPC, EAN 128, Code 128, Code 93, CODABAR, Code 49, Code MSI, Code 11, Code 16K, ISBN/ISSN, ISBT 128, RSS codes

### Reading special bar codes

S/W commands through the RS232 serial port  
Windows configuration program  
Puzzle Solver™, data editing and data concatenation  
ABS and polycarbonate, plus co-molded rubber

Immune to light exposure in offices/facilities, and direct exposure to sunlight  
90% non condensing  
IP64

### OM-3000/OM-3010

External: 10 to 30 Vdc; Host : 5 Vdc ± 10%  
External: max. 10 W, Host: max. 500 mA  
Battery charging (red), Charge completed (green), Power/Data (yellow)  
USB, RS232, Wedge, Wand and RS485  
240 x 108 x 95 mm (9.44 x 4.25 x 3.75 in)  
ABS  
Approx. 380 g / 13.4 oz

### DRAGON™ D

4 to 30 Vdc  
420 mA @ 4 V; 310 mA @ 5 V; 62 mA @ 30 V  
USB, RS232, Wedge, Wand  
-30 to 50 °C (-22 to 122 °F)  
-30 to 70 °C (-22 to 158 °F)  
Withstands repeated drops from 2 m onto a concrete surface  
Approx. 295 g (10.4 oz)

### MODELS

BATTERY TYPE  
DISPLAY

### DRAGON™ M

Li-ION 2150 mAh  
Graphic with backlight, 32 x 96 dots, and font dimension can be selected by the user (with default selection 4 lines x 16 columns) (M131/D model only)  
3 keys (M131/D model only)  
RECHARGE TIME  
External: max. 4 hrs / Host: max. 10 hrs  
Over 60,000 operations

### KEYPAD

### RECHARGE TIME

### OPERATING AUTONOMY

OPERATING TEMP. -20 to 50 °C (-4 to 122 °F)

STORAGE TEMP. -20 to 70 °C (-4 to 158 °F)

DROP RESISTANCE Withstands repeated drops from 2 m

WEIGHT Approx. 395 g

### RADIO SPECIFICATIONS

RADIO FREQUENCY 433.92 MHz (EMEA, Asia, Oceania);  
910 MHz (Americas)

BIT RATE 19,200 bauds (433.92 MHz),  
36,800 (910 MHz)

EFFECTIVE RADIATED <10 mW (433.92 MHz);

POWER <1 mW (910 MHz)

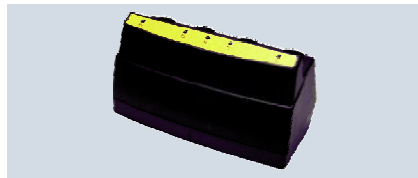
RADIO RANGE Up to 50 m (433.92 MHz);  
Up to 30 m (910 MHz), depending on the working area

MAX NR. Max 32 devices per radio

COEXISTING receiver; max 2000 devices in the same reading area

SYSTEMS

## Accessories



Multi-battery charger



OM-3000



SBS-3000 and RBP-3000

### Stand

Makes it possible to use the reader in hands-free mode.

### OM 3000

Radio base station and Gun charger used with RS232, RS485, Wedge, Wand and USB interfaces. It's compatible with the AC-3000.

### OM-3010

This radio base station and Gun charger is available with RS232, Wedge, Wand and USB interfaces.

### C-3000 Gun charger

Compatible with SBS-3000.

### SBS-3000 Spare Battery Slot

Coupled with OM-3000 or C-3000, allows spare battery charging.

### MBC-3000 Multiple battery charger

It allows 4 battery charging.

### SPC-3000 Desk/Wall Holder

It provides installation flexibility.

### HLS-3000 Universal Holster

Allows the reader to be attached to desktops, work-tables, forklift trucks and other types of supports.

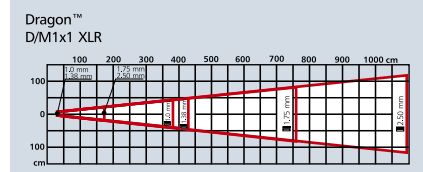
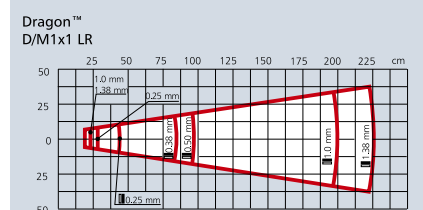
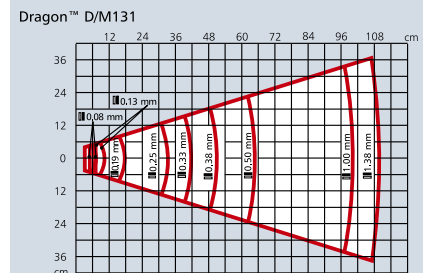
### PC-3000 Protective Case/Belt Holster

It permits the reader to be carried on a belt when not in use and protects it against drops.

### RBP-3000 Removable Battery Pack

Click on/off battery without screw for easy battery replacement and "stand-alone" charging.

## Reading Diagrams



Product and Company names and logos referenced may be either trademarks or registered trademarks of their respective companies. We reserve the right to make modifications and improvements.

Datalogic Scanning, Inc.  
Toll free: 1 800 695 5700  
International: 1 541 683 5700  
E-mail us at: [scanning@datalogic.com](mailto:scanning@datalogic.com)  
[www.scanning.datalogic.com](http://www.scanning.datalogic.com)



R40-0209-US B 0707