

Panasonic
ideas for life

Digital Disk Recorder
WJ-RT416

Real-time

480 ips with High Resolution:
The new standard in high performance
with superb picture quality at an affordable price



Preliminary

High Resolution Real-time Recording

With a total recording rate of 480 ips, the WJ-RT416 offers real-time recording capability in MPEG-4 format. All 16 channels can record 30 ips at a high quality 704 x 240 image with superior clarity and detail.



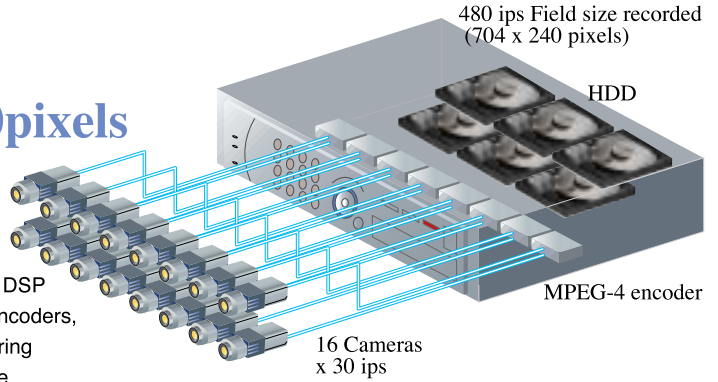
Digital Disk Recorder WJ-RT416

16 channels of video and audio in a cost effective package

480ips at 704 x 240pixels

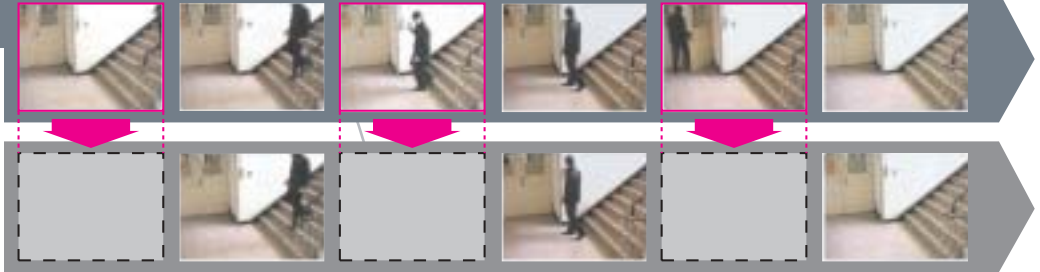
Record all 16 cameras at 30 ips

The WJ-RT416 offers superior technology in order to maximize the encoding capability. The WJ-RT416 utilizes one MPEG-4 encoder DSP for every 2 channels --- for a total of 8 built-in encoders! With 8 total encoders, the WJ-RT416 ensures that no critical moments are missed. By capturing 30 ips, video confirmation of event and evidence are extremely precise.



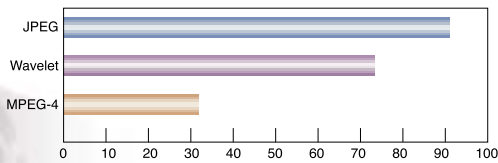
WJ-RT416

30 ips



Even with 15 ips, critical information and important scenes may be missed.

MPEG-4 is an extremely efficient compression method suitable for the recording of video as it captures the smooth movement of objects resulting in excellent video quality. The high compression efficiency capacity of the Hard Disk Drive (HDD) allows for more effective utilization and extended archiving compared with other methods. Data can be transferred over the network using a smaller bandwidth, allowing for smoother viewing of moving objects, subjects and motion with more efficient image management.



MPEG-4

High-quality and high-compression for economical recording

Seamless

Control of the camera, recorder and switcher can be made using only a single unit

A single unit system controller (WV-CU650) controls the WJ-RT416, PTZ cameras and Matrix switcher (WJ-SX650 series) seamlessly. (Please check latest firmware version for system capabilities, as control of WJ-SX650 will be a future upgrade.)



Compatible cameras include

Super Dynamic III Color Dome Camera WV-CS954
Combination Color Dome Camera WV-CS574

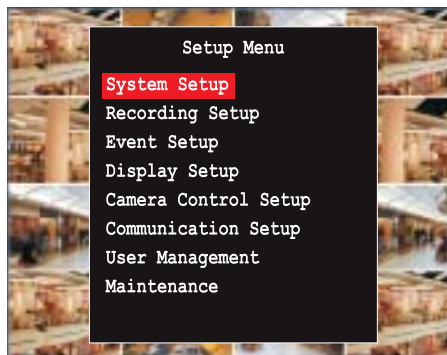
* Up to 4 cameras can be controlled via coaxial cables. With the addition of an optional control board (sold separately) an additional 4 cameras can be controlled via coaxial cable (for a total of 8). Additionally, 16 cameras can be controlled by using data communication control (RS485) for channels 9-16.

Simple Operation

Simple and easy-to-use panels and on-screen set up menu



- Enlarged frequently used buttons
- Primary operations can be performed using the front panel cross pad and adjacent buttons (not actual size).



Easy, intuitive set up menu

Optional storage of up to 1.5TB for extended video archiving

With flexible configurations from 250GB to 1.5TB, the WJ-RT416 allows for flexibility based upon the application and number of cameras needed.

A Full Featured system in an affordable and cost effective format --- perfect for stand-alone or system applications



Recording

16 video input channels, 16 audio input channels

Up to 16 cameras can be connected to the WJ-RT416. All 16 channels of video and audio can be recorded simultaneously.

Video recording of 30 ips per camera

The WJ-RT416 offers the ability to record video at a maximum rate of 30 ips per camera, for all 16 channels.

Overall maximum HDD capacity can grow, as the application and system needs to grow

The WJ-RT416 is designed to grow as the situation dictates. To that end, the current maximum HDD capacity of 1.5TB will be able to be expanded to 3TB in the near future. As needed, you can increase the HDD capacity by installing additional HDD's (sold separately) by simply removing the front panel of the WJ-RT416 and installing the new, larger capacity HDD.



Multiple recording functions

Timer recording : By setting up the days of the week and the time frame for each individual camera, automatic recording, recording rate and alarms, etc., can be set individually for specific time frames.

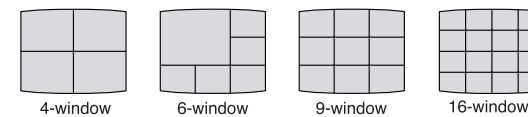
Motion detection recording : When motion is detected in the image of the camera, recording starts automatically.

Terminal input recording : Recording is started by events such as input signals from sensors.

Live Monitoring

Multi screen display

The monitor screen is divided into multiple frames and images from multiple cameras that can be observed at the same time. The screen can be divided into 4, 6, 9 and 16 windows.

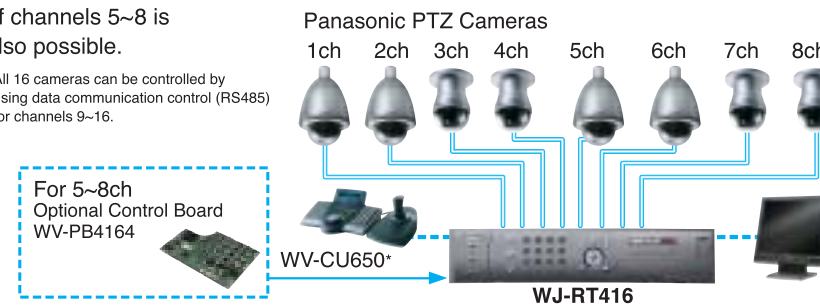


Coaxial control of the camera

By connecting the system controller (WV-CU650*), PTZ cameras connected to channels 1~4 of the WJ-RT416 can be directly controlled.

Through installation of the WV-PB4164 board (sold separately) control of channels 5~8 is also possible.

* All 16 cameras can be controlled by using data communication control (RS485) for channels 9~16.

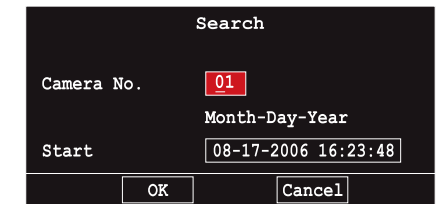


* Please check latest firmware version for system capabilities, as control from WV-CU650 will be a future upgrade.

Search and play back

Direct (Time & Date) Search

By entering a specific date and the time, the recorded images closest to that date and time are displayed.



List search

By entering a specific date and the time, a list of the recorded images closest to that date and time is displayed and selection and play back can be made from the list through a simple operation.

SEARCH RESULT				
CH	Quality	Start	End	
2	NQ	2006-09-14 15:09:03	2006-09-14 15:24:03	
2	NQ	2006-09-14 14:54:01	2006-09-14 14:09:01	
2	NQ	2006-09-14 14:38:59	2006-09-14 14:53:59	
2	NQ	2006-09-14 14:23:57	2006-09-14 14:38:57	
2	NQ	2006-09-14 14:08:55	2006-09-14 14:23:55	
2	NQ	2006-09-14 13:53:53	2006-09-14 14:08:53	
2	NQ	2006-09-14 13:38:51	2006-09-14 13:53:51	
2	NQ	2006-09-14 13:23:49	2006-09-14 13:38:49	

Page 001/059

Full Network Capability

With the WJ-RT416 connected to a network and the included software installed on a PC, monitoring and a variety of setting adjustments can be made from the PC.

Major Operational Functions via PC

Monitoring of camera image

Live image of the camera can be monitored

Play back of the recorded image

Images recorded in the HDDs of the WJ-RT416 can be played back and monitored

Various setting adjustments

Various setting adjustments, such as the recording rate, can be managed via the PC

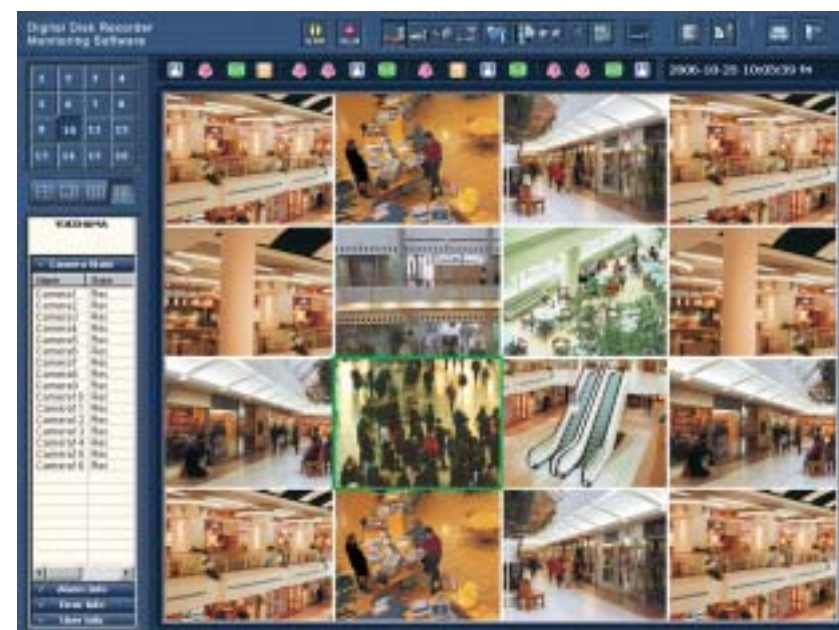
Alarm information

Date and time when an alarm took place and type of alarm

Image download

Video displayed on the PC and audio can be saved into the PC

Video and audio recorded in the WJ-RT416 can be downloaded into the PC

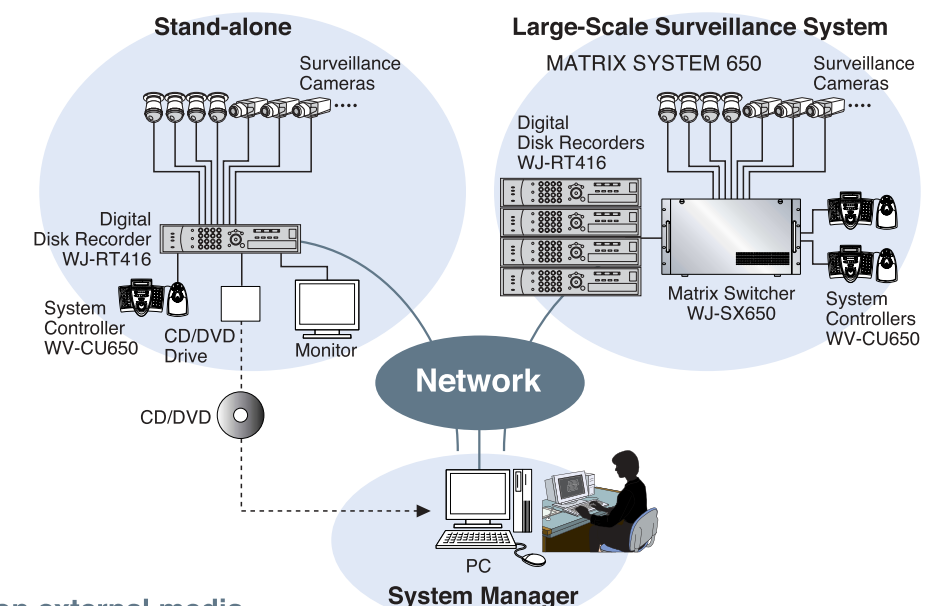


Graphical User Interface

The above photographs were taken for the purpose of this explanation; actual performance and images may vary depending on environmental or other conditions.

Connecting with the WJ-SX650 Matrix Switcher for larger-scale system applications

(Please check latest firmware version for system capabilities, as control of WJ-SX650 will be a future upgrade.)



Storage on external media

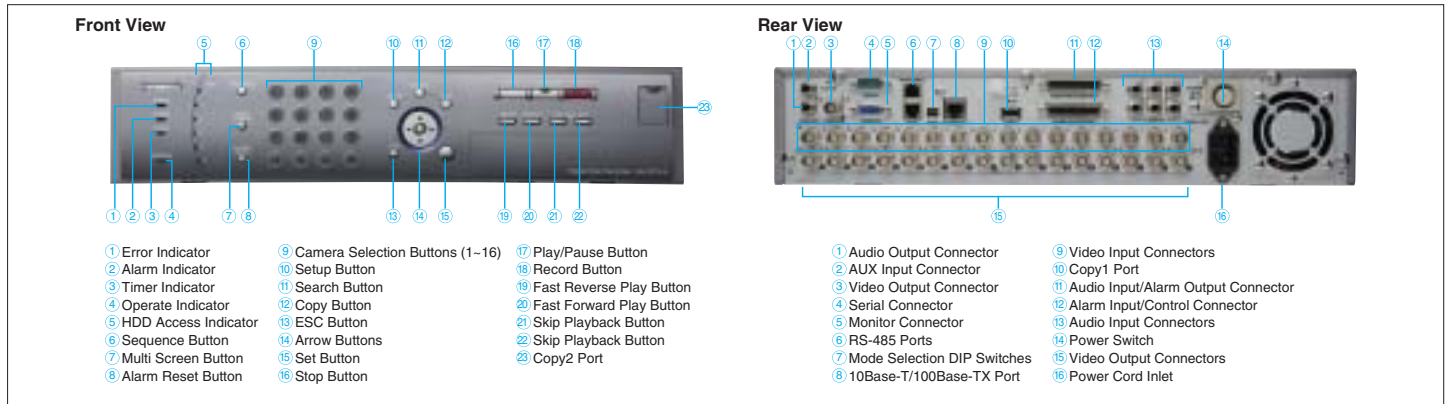
Images recorded in the WJ-RT416 can be copied to external recording media.

<Recording media for making copies>

External HDD/CD/DVD : Copying is possible to external HDD, CD and DVD drives connected to the copy port.

* Please check latest firmware version, as storage on external media will be future upgrade.

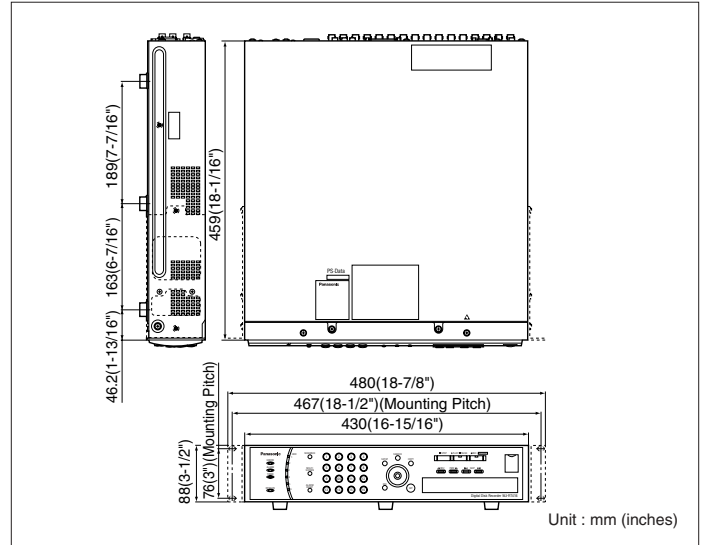
MAJOR OPERATING CONTROLS & TERMINALS



SPECIFICATIONS

General Specifications	
Power Supply	120 V AC, 60 Hz
Power Consumption (approx.)	110 W
Ambient Operating Temperature	+5 °C ~ +45 °C (41 °F ~ 113 °F)
Ambient Operating Humidity	5 % ~ 90 % (without condensation)
Dimensions	430 mm (W) x 88 mm (H) x 459 mm (D) (16-15/16" (W) x 3-1/2" (H) x 18-1/16" (D)) (excluding rubber feet and projections)
Weight (approx.)	12 kg (26.4 lbs.)
Input/Output	
Video	Video Input 1.0 V [p-p] / 75 Ω NTSC Composite video signal (BNC) x 16
	Video Output 1.0 V [p-p] / 75 Ω NTSC Composite video signal (BNC) x 1, RGB output (15pin D-sub) x 1
Audio	Audio Input -10 dB, 22 KΩ x 16 (ch.1-6 RCA, ch.7-16 D-sub 25pin), Intercom (RCA) x1
	Audio Output -10 dB, 22 KΩ (RCA) x 1
Alarm	Alarm Input Non-voltage make contact, Pulse width 100ms or more, 16 input (D-sub 25pin)
	Alarm Output Normally Open / Normally Close / Common, DC 30V 1A, 4 output (D-sub 25pin)
Ethernet Interface	10 Base-T / 100 Base-TX Ethernet port (RJ-45) x 1
Remote Interface	RS-485 x 1 (RJ-11)
DATA Interface	RS-485 x 1 (RJ-11)
DATA Backup Interface	High speed serial interface (front panel x 1, rear panel x 1)
Function	
Video Compression Mode	MPEG-4
Image Resolution	Field (704 x 240 pixels), SIF (352 x 240 pixels)
Image Display	1/4/6/9/16 split screen display
Image Recording Rate	Max. 480 ips / system (30 ips x 16 ch)

DIMENSIONS



OPTIONAL COMPONENTS & ACCESSORIES

<p>Control Board WV-PB4164</p>	<p>Weather Proof Super Dynamic III Color Dome Camera WV-CW964</p>	<p>Super Dynamic III Color Dome Camera WV-CS954</p>	<p>Weather Proof Super Dynamic II Color Camera WV-CW374</p>	<p>Vandal Proof Super Dynamic III Color Dome Cameras WV-CW484 Series</p>
<p>MATRIX SYSTEM 650</p>	<p>Super Dynamic III Color Surveillance Cameras WV-CP480 Series</p> <p>Lens: optional</p>	<p>Compact Color CCTV Camera WV-CP254H</p> <p>Lens: optional</p>	<p>Color Surveillance Cameras WV-CP280 Series</p> <p>Lens: optional</p>	<p>Color Dome Cameras WV-CF294/284 Series</p>

Trademarks and registered trademarks: Microsoft, and Windows are registered trademarks of Microsoft Corporation in the U.S. and other countries.

Important – Safety Precaution: carefully read the operating instructions and installation manual before using this product.

– Panasonic can not be responsible for network performance and/or other manufacturer products that reside on the network.

• All TV pictures are simulated. • Weights and dimensions are approximate. • Specifications are subject to change without notice. • These products may be subject to export control regulations.

Panasonic

Panasonic System Solutions Company
Unit Company of Panasonic Corporation of North America
Security Systems

Website : www.panasonic.com/security

For Customer Support : call **1.877.733.3689**

Executive Office : Three Panasonic Way 2H-2, Secaucus, New Jersey 07094

DISTRIBUTED BY:

PANASONIC CANADA INC.

5770 Ambler Drive, Mississauga, Ontario, L4W 2T3 Canada (905) 624-5010

PANASONIC PUERTO RICO INC.

DIVISION OF PANASONIC CORPORATION OF NORTH AMERICA

San Gabriel Industrial Park, 65th Infantry Ave. KM. 9.5 Carolina, P.R. 00985 (809) 750-4300

Printed in Japan

WJ-JHRT416C(2P-547)